

ERASMUS IP 2012-2013
STUDENTS' EVALUATION RESULTS
TOTAL 32 STUDENTS

Participating students during evaluation

IP HOST COUNTRY: GREECE (GR), 9 students

BELGIUM (B), 3 students

GERMANY (D), 2 students

FRANCE (F), 5 students

ROMANIA (RO), 4 students

SLOVENIA (SI), 3 students

TURKEY (TR), 6 students

TITLE OF THE IP: LiDe
LOCATION OF THE IP: ATHENS
COORDINATING PARTNER: HELLENIC OPEN UNIVERSITY
DATE OF THE IP: JUNE 24 - JULY 5, 2013

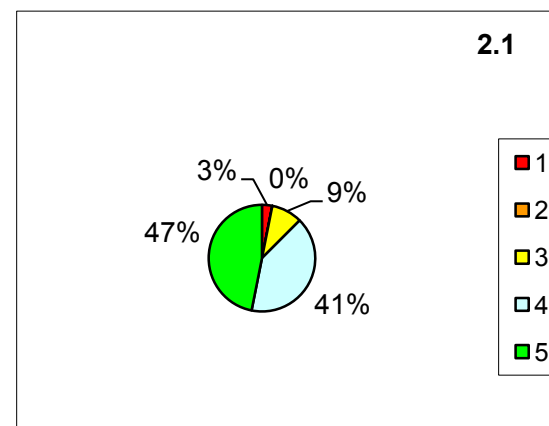
2. GENERAL INFORMATION

2.1 How satisfied were you with the duration of the IP: scale 1-5: 1=not at all, 5=very much

	1	2	3	4	5
B	0	0	0	2	1
D	0	0	0	2	0
F	0	0	1	3	1
GR	1	0	2	1	5
RO	0	0	0	2	2
SI	0	0	0	0	3
TR	0	0	0	3	3
Total	1	0	3	13	15

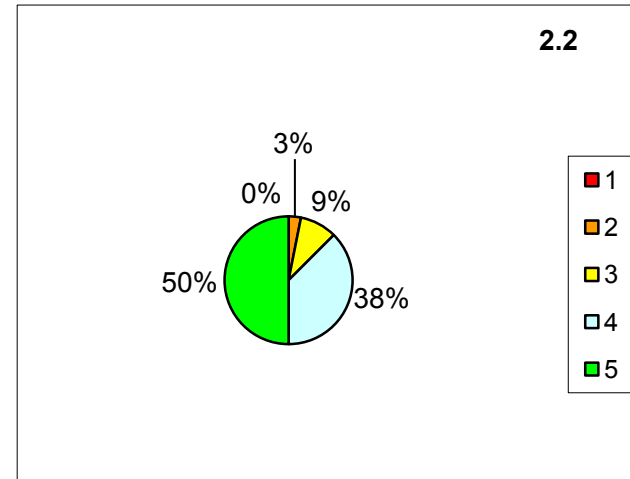
%-Total 3,1 0 9,4 40,6 46,9

average: 4,28



2.2 How satisfied were you with the dates of the IP: scale 1-5: 1=not at all, 5=very much

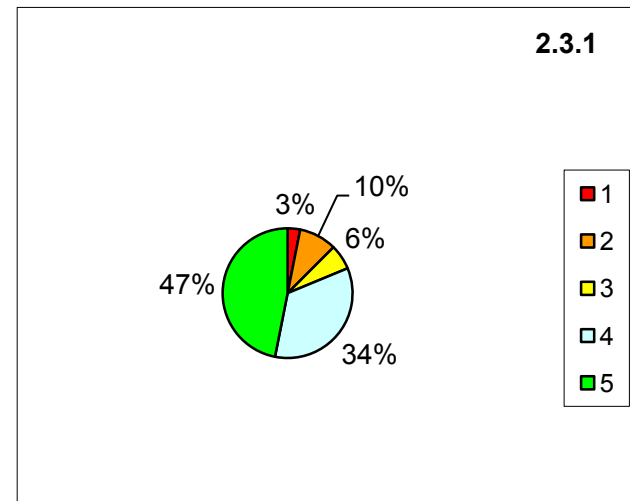
	1	2	3	4	5
B	0	0	1	1	1
D	0	0	1	1	0
F	0	0	0	3	2
GR	0	0	0	4	5
RO	0	0	1	0	3
SI	0	0	0	1	2
TR	0	1	0	2	3
Total	0	1	3	12	16
%-Total	0	3,1	9,4	37,5	50
average:	4,34				



2.3.1 Which were the factors, which motivated you to participate: scale 1-5: 1=not at all, 5=very much

Academic

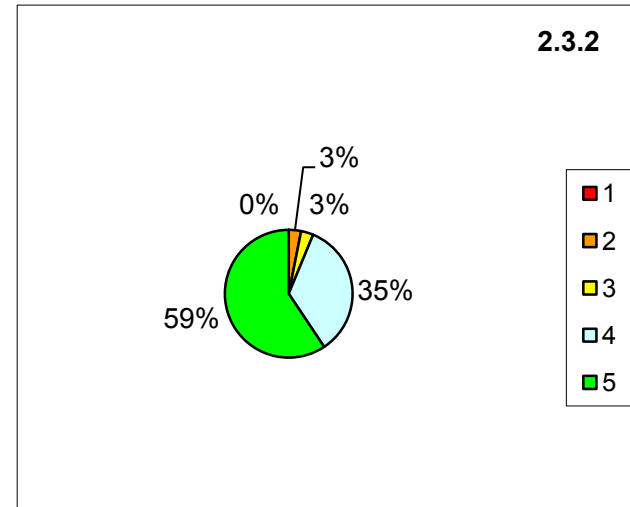
	1	2	3	4	5
B	0	0	0	3	0
D	0	0	0	1	1
F	0	0	1	2	2
GR	0	0	0	1	8
RO	1	1	1	1	0
SI	0	0	0	1	2
TR	0	2	0	2	2
Total	1	3	2	11	15
%-Total	3,1	9,4	6,3	34,4	46,9
average:	4,13				



2.3.2 Which were the factors, which motivated you to participate: scale 1-5: 1=not at all, 5=very much

Cultural

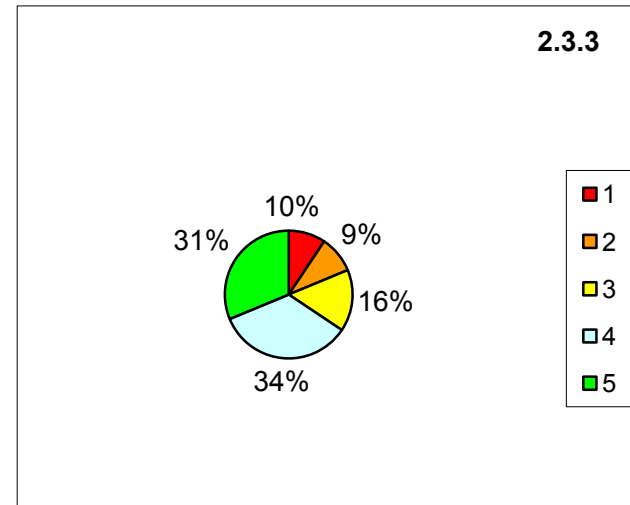
	1	2	3	4	5
B	0	0	0	1	2
D	0	0	1	0	1
F	0	1	0	1	3
GR	0	0	0	2	7
RO	0	0	0	4	0
SI	0	0	0	0	3
TR	0	0	0	3	3
Total	0	1	1	11	19
%-Total	0	3,1	3,1	34,4	59,4
average: 4,5					



2.3.3 Which were the factors, which motivated you to participate: scale 1-5: 1=not at all, 5=very much

Practice of foreign Language

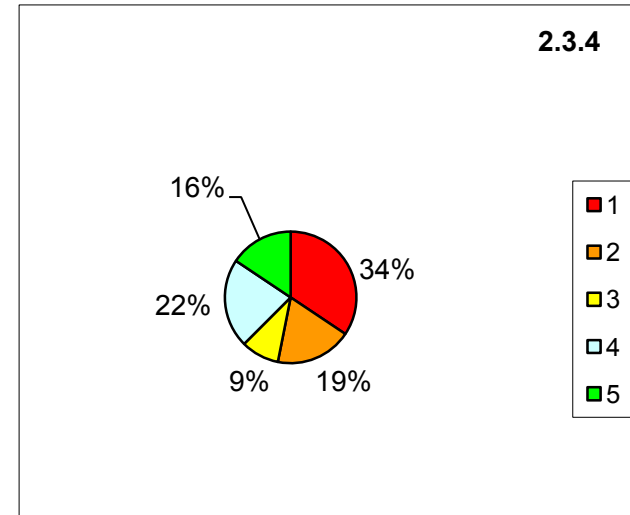
	1	2	3	4	5
B	0	1	2	0	0
D	1	0	0	0	1
F	0	0	0	4	1
GR	1	2	2	2	2
RO	0	0	0	2	2
SI	1	0	0	0	2
TR	0	0	1	3	2
Total	3	3	5	11	10
%-Total	9,4	9,4	15,6	34,4	31,3
average: 3,69					



2.3.4 Which were the factors, which motivated you to participate: scale 1-5: 1=not at all, 5=very much

Friends living abroad

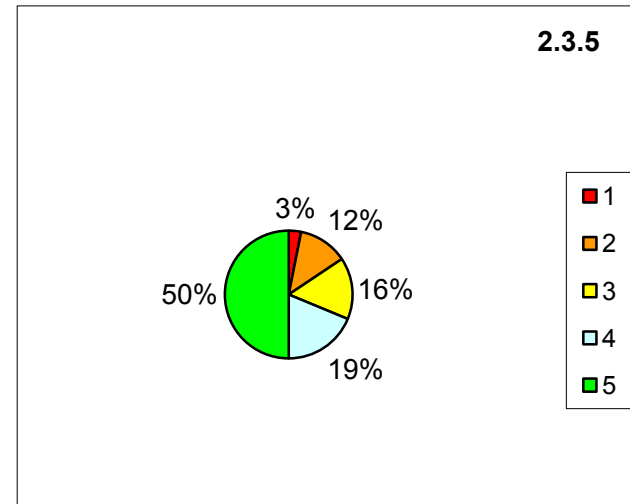
	1	2	3	4	5
B	2	1	0	0	0
D	1	0	0	0	1
F	1	0	0	3	1
GR	3	3	0	1	2
RO	1	0	2	1	0
SI	0	2	0	0	1
TR	3	0	1	2	0
Total	11	6	3	7	5
%-Total	34,4	18,8	9,4	21,9	15,6
average:	2,66				



2.3.5 Which were the factors, which motivated you to participate: scale 1-5: 1=not at all, 5=very much

Career plans

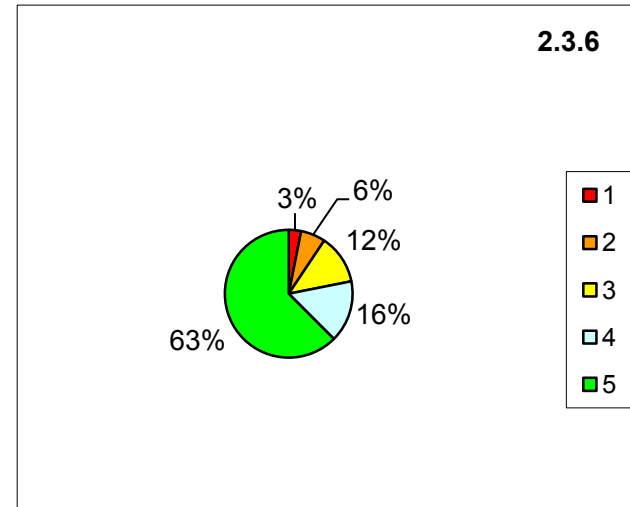
	1	2	3	4	5
B	0	0	2	0	1
D	0	0	1	0	1
F	0	1	1	0	3
GR	0	2	0	1	6
RO	0	0	0	2	2
SI	0	1	1	0	1
TR	1	0	0	3	2
Total	1	4	5	6	16
%-Total	3,1	12,5	15,6	18,8	50
average:	4				



2.3.6 Which were the factors, which motivated you to participate: scale 1-5: 1=not at all, 5=very much

European experience

	1	2	3	4	5
B	1	0	0	1	1
D	0	0	1	0	1
F	0	1	0	0	4
GR	0	0	1	0	8
RO	0	0	0	1	3
SI	0	1	1	0	1
TR	0	0	1	3	2
Total	1	2	4	5	20
%-Total	3,1	6,3	12,5	15,6	62,5
average: 4,28					

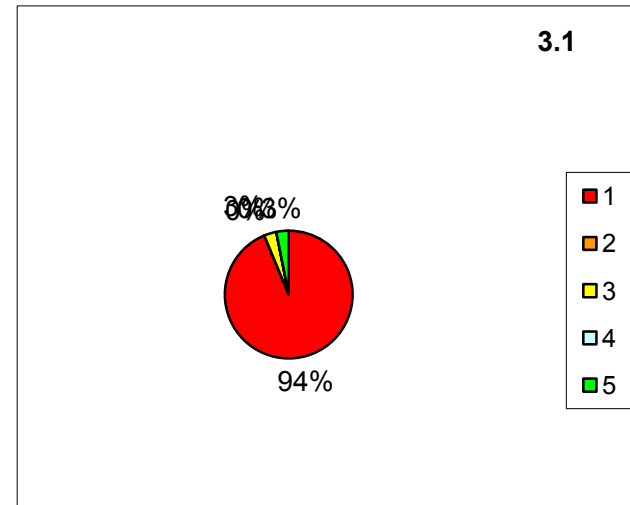


3. INFORMATION AND SUPPORT

3.1 Where did you hear about IP

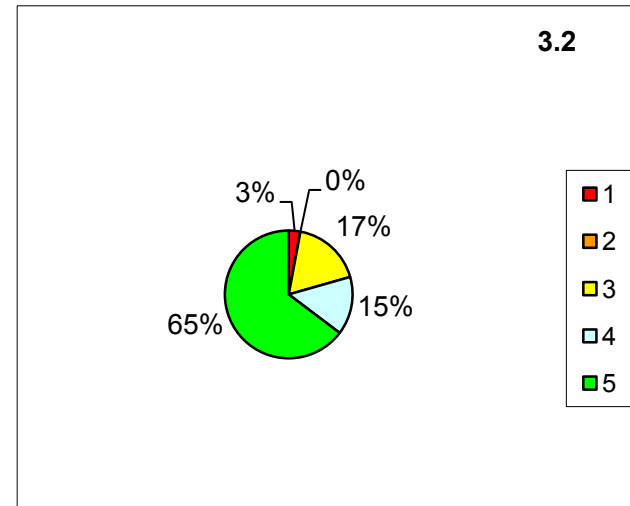
1=Home Institute, 2=Host Institute, 3=Other students, 4=Former participants, 5=Internet

	1	2	3	4	5
B	3	0	0	0	0
D	2	0	0	0	0
F	5	0	0	0	0
GR	9	0	0	0	0
RO	4	0	0	0	0
SI	2	0	0	0	1
TR	5	0	1	0	0
Total	30	0	1	0	1



3.2 Did you receive adequate support from home/host institution before and during the IP: scale 1-5: 1=poor/negative, 5=excellent

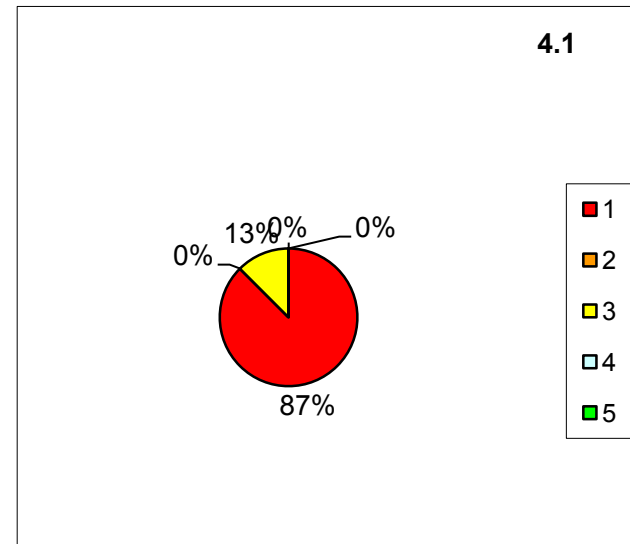
	1	2	3	4	5
B	0	0	0	1	2
D	0	0	1	1	0
F	0	0	3	2	0
GR	0	0	0	0	9
RO	0	0	0	0	5
SI	1	0	0	0	2
TR	0	0	2	1	4
Total	1	0	6	5	22
%-Total	3,1	0	18,8	15,6	68,8
average:	4,66				



4. ACCOMMODATION AND INFRASTRUCTURE

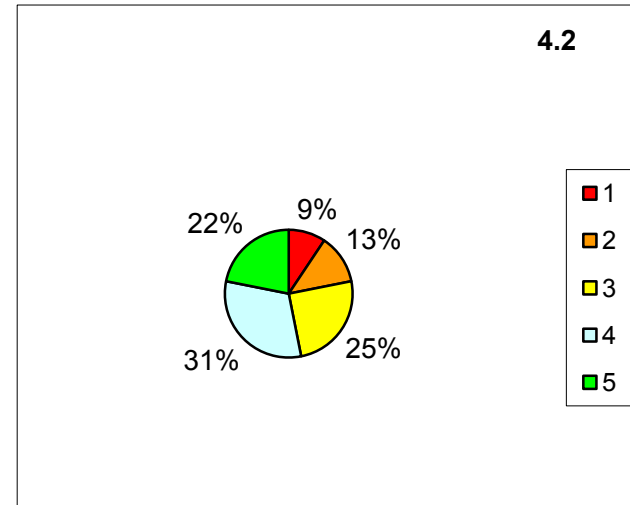
4.1 Type of your accommodation in the host country: 1=University accommodation, 2=Apartment (HOSTEL), 3=private housing, 4=Hotel, 5=Other

	1	2	3	4	5
B	3	0	0	0	0
D	2	0	0	0	0
F	5	0	0	0	0
GR	5	0	4	0	0
RO	4	0	0	0	0
SI	3	0	0	0	0
TR	6	0	0	0	0
Total	28	0	4	0	0
%-Total	87,5	0	12,5	0	0



4.2 Were you satisfied with your accommodation: scale 1-5: 1=not at all, 5=very much

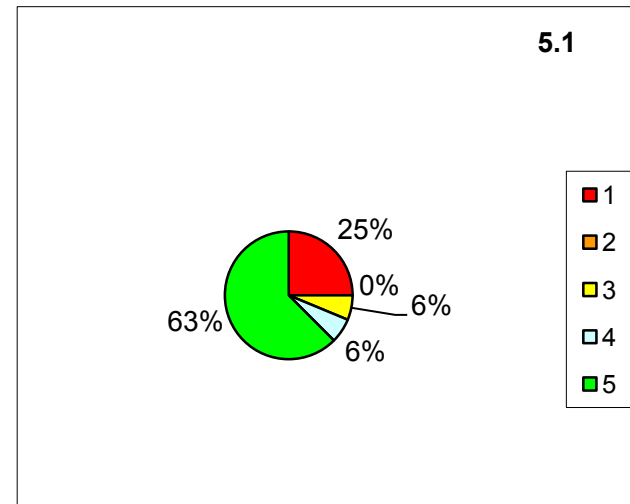
	1	2	3	4	5
B	0	0	0	3	0
D	1	0	1	0	0
F	0	0	2	2	1
GR	0	0	3	2	4
RO	0	1	0	1	2
SI	2	0	0	1	0
TR	0	3	2	1	0
Total	3	4	8	10	7
%-Total	9,4	12,5	25	31,3	21,9



5 RECOGNITION

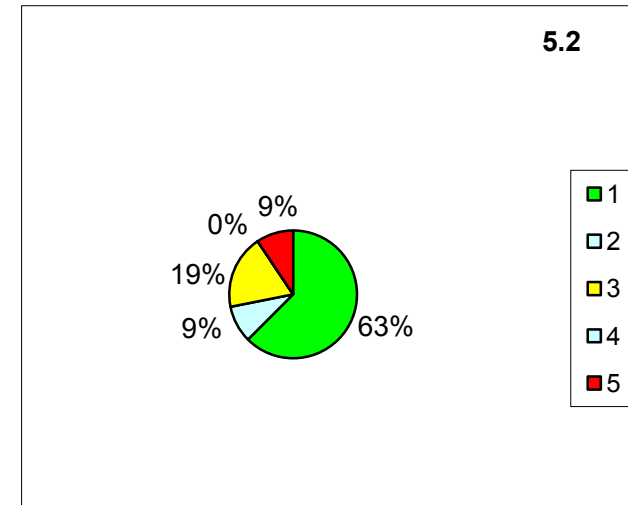
5.1 Will you gain recognition for your IP by your home institution: 1,2=n.a, 3=Diploma supplement, 4=ECTS NO, 5=ECTS YES

	1	2	3	4	5
B	0	0	0	0	3
D	0	0	0	0	2
F	0	0	0	1	4
GR	4	0	2	0	3
RO	2	0	0	0	2
SI	1	0	0	1	1
TR	1	0	0	0	5
Total	8	0	2	2	20
%-Total	25	0	6,3	6,3	62,5



5.2 Did you encounter any problems concerning the recognition of your IP: scale 1-5: 1=not at all, 5=very much

	1	2	3	4	5
B	3	0	0	0	0
D	0	0	2	0	0
F	0	1	2	0	1
GR	9	0	0	0	0
RO	2	2	0	0	0
SI	2	0	0	0	2
TR	4	0	2	0	0
Total	20	3	6	0	3
%-Total	62,5	9,4	18,8	0	9,4

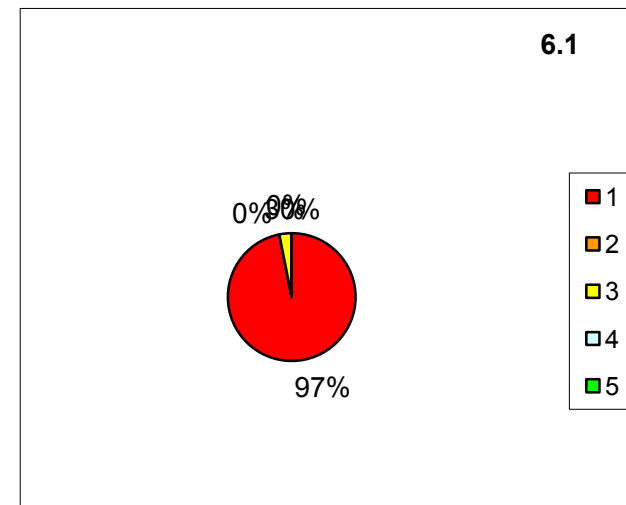


6 COSTS

6.1 What kind of costs did you need to contribute to:

1=Travel to the host institute, 2=Accommodation, 3=Field visits, 4=Material, 5=Social Programme (Museum)

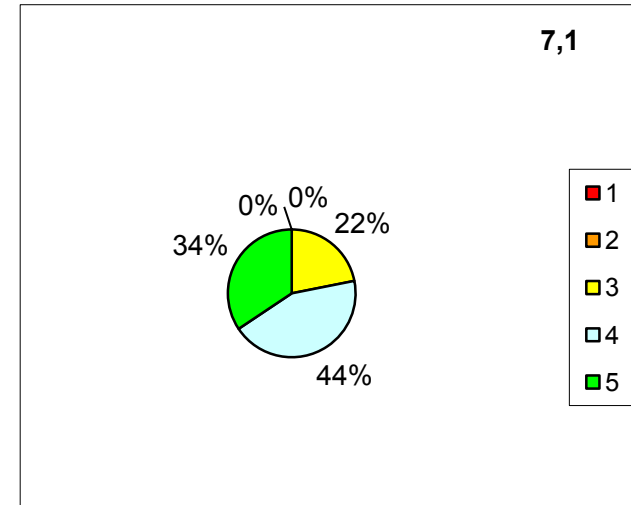
	1	2	3	4	5
B	3	0	0	0	0
D	2	0	0	0	0
F	5	0	0	0	0
GR	8	0	1	0	0
RO	4	0	0	0	0
SI	3	0	0	0	0
TR	6	0	0	0	0
Total	31	0	1	0	0
%-Total	96,9	0	3,1	0	0



7 PERSONAL EXPERIENCE - EVALUATION OF THE IP

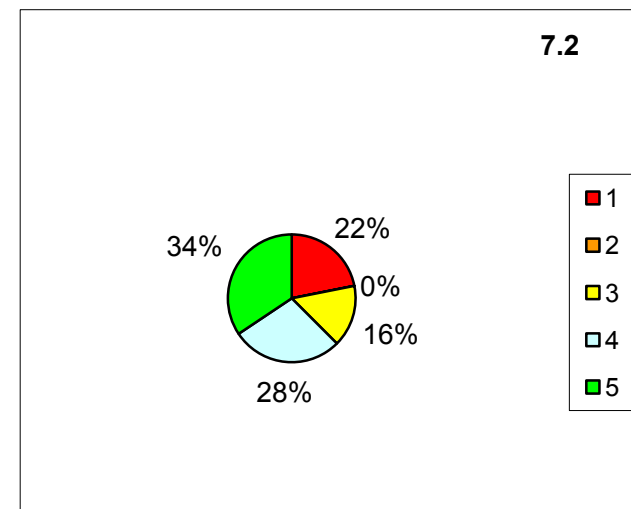
7.1 Judgement of academic/learning outcomes of the IP: scale 1-5: 1=not at all, 5=very much

	1	2	3	4	5
B	0	0	1	2	0
D	0	0	1	1	0
F	0	0	0	2	3
GR	0	0	1	4	4
RO	0	0	1	0	3
SI	0	0	2	1	0
TR	0	0	1	4	1
Total	0	0	7	14	11
%-Total	0	0	21,9	43,8	34,4
average:	4,13				



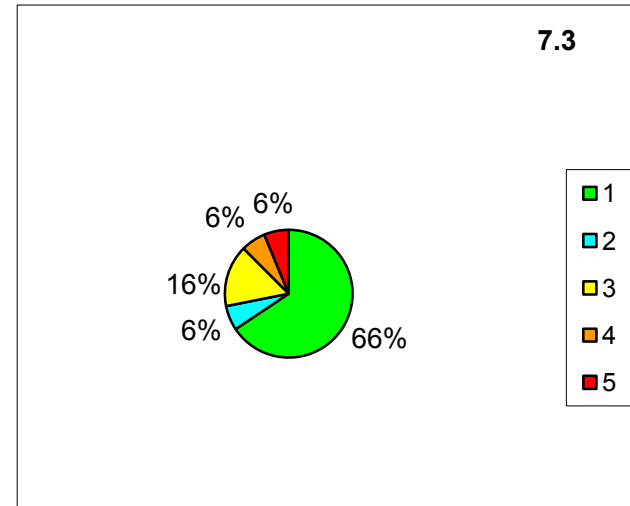
7.2 Judgement of personal outcomes of the IP: scale 1-5: 1=not at all, 5=very much

	1	2	3	4	5
B	0	0	0	2	1
D	0	0	2	0	0
F	0	0	1	2	2
GR	7	0	1	1	0
RO	0	0	0	1	3
SI	0	0	0	0	3
TR	0	0	1	3	2
Total	7	0	5	9	11
%-Total	21,9	0	15,6	28,1	34,4
average:	3,53				



7.3 Did you encounter any serious problems during IP: scale 1-5: 1=not at all, 5=very much

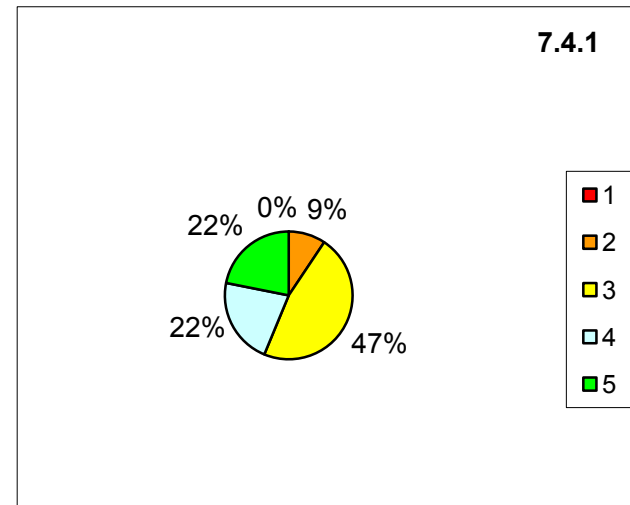
	1	2	3	4	5
B	1	0	2	0	0
D	1	1	0	0	0
F	2	1	1	1	0
GR	7	0	1	1	0
RO	4	0	0	0	0
SI	0	0	1	0	2
TR	6	0	0	0	0
Total	21	2	5	2	2
%-Total	65,6	6,3	15,6	6,3	6,3
average:	1,81				



7.4.1 How satisfied were you with the academic activities and pedagogical aspects of thr IP in terms of the following aspects:
scale 1-5: 1=not at all, 5=very much

The number of hours taught

	1	2	3	4	5
B	0	0	2	1	0
D	0	0	2	0	0
F	0	0	2	3	0
GR	0	1	3	2	3
RO	0	0	2	0	2
SI	0	2	1	0	0
TR	0	0	3	1	2
Total	0	3	15	7	7
%-Total	0	9,4	46,9	21,9	21,9
average:	3,56				

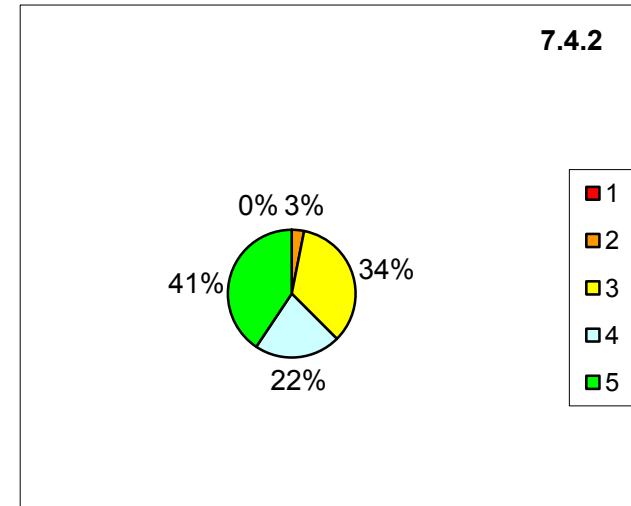


7.4.2 How satisfied were you with the academic activities and pedagogical aspects of thr IP in terms of the following aspects:

scale 1-5: 1=not at all, 5=very much

The equipment used

	1	2	3	4	5
B	0	0	1	1	1
D	0	0	2	0	0
F	0	0	2	1	2
GR	0	0	2	1	6
RO	0	1	0	2	1
SI	0	0	2	0	1
TR	0	0	2	2	2
Total	0	1	11	7	13
%-Total	0	3,1	34,4	21,9	40,6
average: 4					

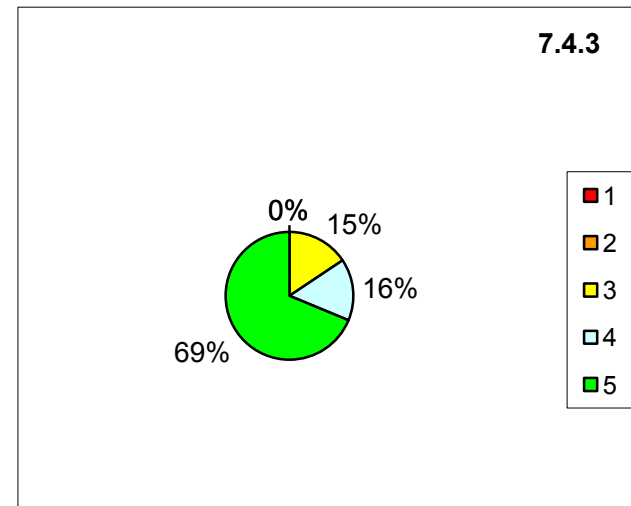


7.4.3 How satisfied were you with the academic activities and pedagogical aspects of thr IP in terms of the following aspects:

scale 1-5: 1=not at all, 5=very much

The capabilities and expertise of the professors

	1	2	3	4	5
B	0	0	0	2	1
D	0	0	2	0	0
F	0	0	0	0	5
GR	0	0	1	1	7
RO	0	0	0	0	4
SI	0	0	2	0	1
TR	0	0	0	2	4
Total	0	0	5	5	22
%-Total	0	0	15,6	15,6	68,8
average: 4,53					

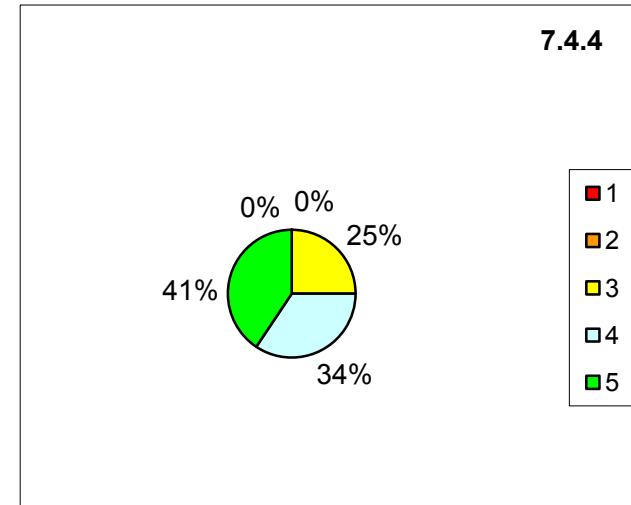


7.4.4 How satisfied were you with the academic activities and pedagogical aspects of thr IP in terms of the following aspects:

scale 1-5: 1=not at all, 5=very much

The overall quality of teaching

	1	2	3	4	5
B	0	0	0	3	0
D	0	0	2	0	0
F	0	0	0	1	4
GR	0	0	2	6	1
RO	0	0	0	0	4
SI	0	0	2	0	1
TR	0	0	2	1	3
Total	0	0	8	11	13
%-Total	0	0	25	34,4	40,6
average: 4,16					

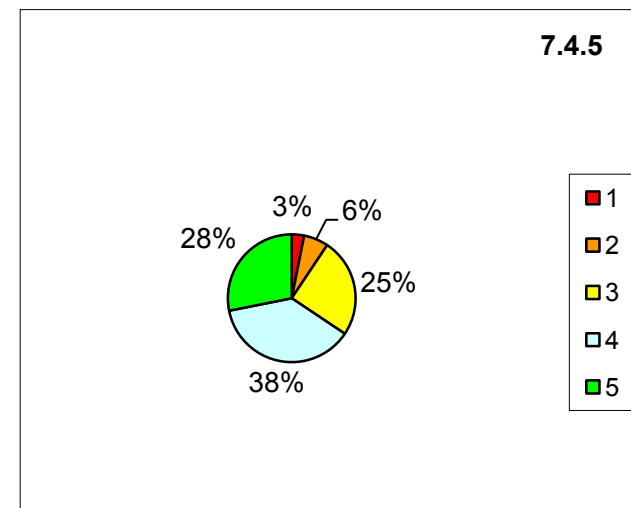


7.4.5 How satisfied were you with the academic activities and pedagogical aspects of thr IP in terms of the following aspects:

scale 1-5: 1=not at all, 5=very much

The expected learning outcomes

	1	2	3	4	5
B	0	0	2	1	0
D	0	0	1	1	0
F	0	0	1	2	2
GR	1	1	3	3	1
RO	0	0	0	1	3
SI	0	0	1	1	1
TR	0	1	0	3	2
Total	1	2	8	12	9
%-Total	3,1	6,3	25	37,5	28,1
average: 3,81					

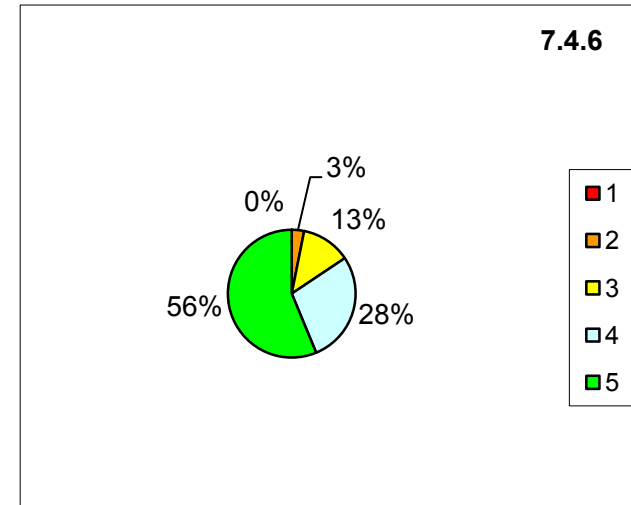


7.4.6 How satisfied were you with the academic activities and pedagogical aspects of thr IP in terms of the following aspects:

scale 1-5: 1=not at all, 5=very much

The activities besides the general course

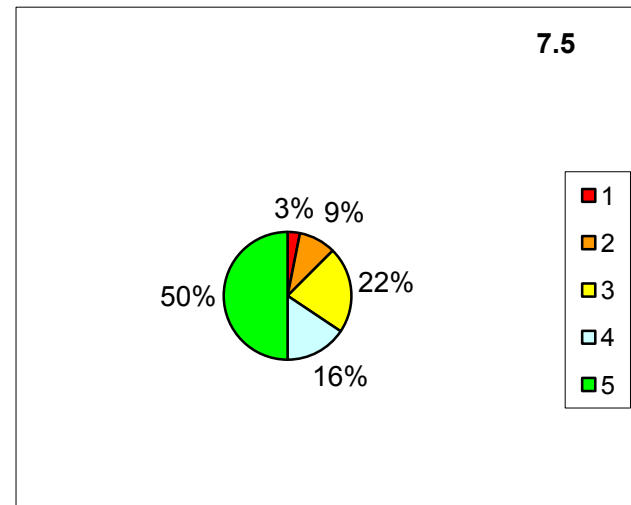
	1	2	3	4	5
B	0	0	0	2	1
D	0	0	1	1	0
F	0	0	0	1	4
GR	0	0	2	3	4
RO	0	0	0	1	3
SI	0	1	0	0	2
TR	0	0	1	1	4
Total	0	1	4	9	18
%-Total	0	3,1	12,5	28,1	56,3
average: 4,38					



7.5 Do you think participation in the IP will help you in your futher studies/career:

scale 1-5: 1=not at all, 5=very much

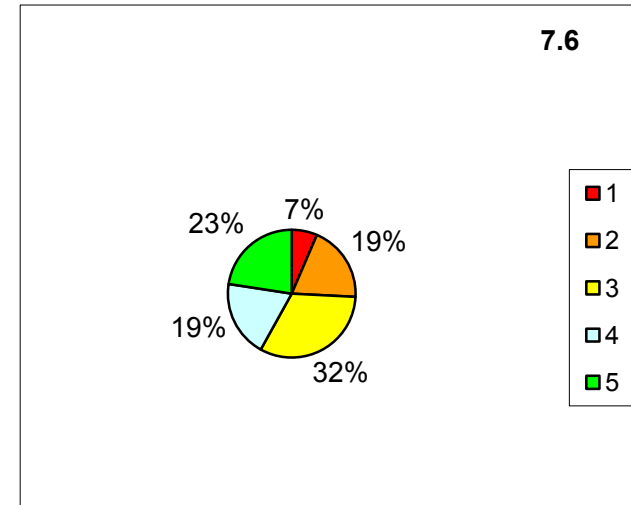
	1	2	3	4	5
B	0	1	0	0	2
D	0	0	1	0	1
F	0	1	2	0	2
GR	0	0	3	3	3
RO	0	0	1	0	3
SI	0	1	0	1	1
TR	1	0	0	1	4
Total	1	3	7	5	16
%-Total	3,1	9,4	21,9	15,6	50
average: 4					



7.6 Do you think participation in the IP will help you in finding a job:

scale 1-5: 1=not at all, 5=very much

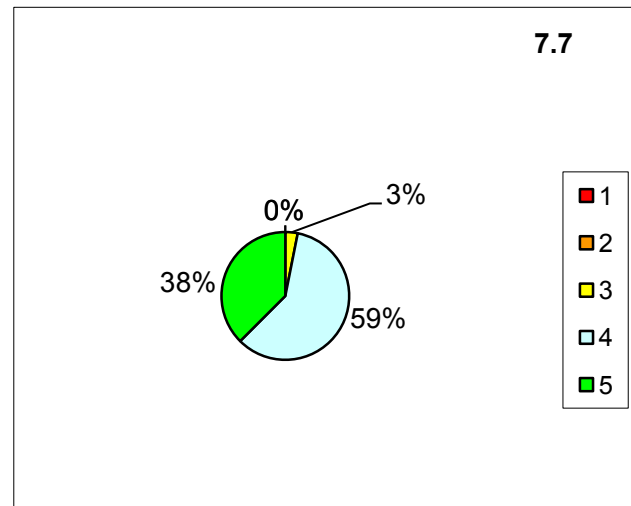
	1	2	3	4	5
B	0	1	0	0	2
D	0	0	1	0	1
F	0	1	2	1	0
GR	0	4	3	2	0
RO	0	0	0	1	3
SI	1	0	0	1	1
TR	1	0	4	1	0
Total	2	6	10	6	7
%-Total	6,3	18,8	31,3	18,8	21,9
average:	3,22				



7.7 Overall evaluation of the IP:

scale 1-5: 1=not at all, 5=very much

	1	2	3	4	5
B	0	0	0	1	2
D	0	0	0	2	0
F	0	0	0	3	2
GR	0	0	0	7	2
RO	0	0	0	1	3
SI	0	0	0	2	1
TR	0	0	1	3	2
Total	0	0	1	19	12
%-Total	0	0	3,1	59,4	37,5
average:	4,34				



Recommendations and ideas for the IP organizers:

more outdoor activities and cultural ones

less lectures and faster teaching, more practice and/or more artistic projects

better accommodation (no internet at rooms, flooding in one room)

tour visit to the city with bus

better hours arrangement (eg. bigger noon break)

more time for swimming, Athens is besides the sea

Some comments from students and teachers:

I enjoyed the time spend in Athens very much

Thank you for everything. The experience in Athens will be an unforgettable memory for all of us

First of all I thank you for everything such as organisation and your interests. Especially i appreciate for your Greek friendship

We only did not learn new things also we have met very good Greek friends. I think this is one of the most important part of the course

I would like to thank you and all your colleagues for the summer school. It was a very useful and valuable experience

I enjoyed the lectures, the indoor and outdoor activities and the visit to Philips...

I would like also to express my appreciation for the help and the generosity of all of you

I'd like to thank you for every thing, it was a very nice experience and we're all glad that we were part of it

I would like to thank you for the IP Erasmus program in Athens, It was amazing and I will remember for a long time my stay in Athens.

You have put extraordinary moments in my ordinary life; so thank you

I ♥ IP, ... keep up the good work, Lambros was the Best, thank you for the hospitality